



small things
big differences

rattleware.com



Introducing Cremaware™

Our new collection of high quality porcelain cups and saucers feature a unique curved interior, which preserves the crema, and helps create beautiful drinks effortlessly.

On the flip side, the bottoms of the cups have been designed with notches to avoid a vacuum effect with saucers, and to drain water after washing.



New! Cupping Spoons

41080
Cupping Spoon
Stainless Steel



41082
Cupping Spoon
Silver Plated



40006-12 Oval Coffee Bean Trays



83010-12
Clear Plastic Label Holder
Fits on coffee bean trays

Stainless Steel Wire Pastry Baskets

14" x 6" x 2"
06110-S Silver
06110-SV Silver Vein
06110-MG Matte Gray



14" x 12" x 2"
06120-S Silver
06120-SV Silver Vein
06120-MG Matte Gray



Cremaware Cups

2 oz Tapered Cup
White 18103-WH
Black 18103-BL
Brown 18103-BR

2 oz Demitasse Cup
White 18102-WH
Black 18102-BL
Brown 18102-BR

6 oz Cup
White 18106-WH
Black 18106-BL
Brown 18106-BR

8 oz Cup
White 18108-WH
Black 18108-BL
Brown 18108-BR

10 oz Cup
White 18110-WH
Black 18110-BL
Brown 18110-BR

12 oz Cup
White 18112-WH
Black 18112-BL
Brown 18112-BR

16 oz Cup
White 18116-WH
Black 18116-BL
Brown 18116-BR

20 oz Cup
White 18120-WH
Black 18120-BL
Brown 18120-BR

Cremaware Saucers

Saucer, 4.5" diameter
Fits 2 oz demitasse
& tapered cups
White 18201-WH
Black 18201-BL
Brown 18201-BR

Saucer, 6" diameter
Fits 6, 8 & 10 oz cups
White 18210-WH
Black 18210-BL
Brown 18210-BR

Saucer, 7" diameter
Fits 12, 16 & 20 oz cups
White 18220-WH
Black 18220-BL
Brown 18220-BR



10350 Tea Pot
14 oz 13.95
10305 Replacement Lid



NEW!
19101
3 oz Porcelain Creamer



Shot Pitcher

Handle for comfortable grip and 2 spouts for drip-free pouring
27610 3 oz Logo Spouted Shot Pitcher with handle
Marked at 10 ml and 1/2 oz increments

Steaming Pitchers



Spouted Bell Pitcher
This design combines the classic bell pitcher shape with a latte art spout. Great for pouring latte art.
27501 16 oz Pitcher
27502 25 oz Pitcher
27503 40 oz Pitcher
27504 60 oz Pitcher



Handle Free Bell Pitcher
This bell pitcher's handle free style allows baristas more flexibility when steaming and pouring latte art. Insulated wrap protects hands from the heat.
27550 16 oz Pitcher



Thermometer Clip Pitcher
Features an integrated clip welded on to the pitcher to keep your thermometer in place. Thermometer not included.
27202 20 oz Pitcher
27203 32 oz Pitcher



Latte Art Pitcher
Tapered spout makes these pitchers ideal for performing latte art. A popular, basic steaming pitcher.
07000 12 oz Macchiato Pitcher
07010 20 oz Pitcher
07011 32 oz Pitcher
07079 56 oz Pitcher



Graduated Latte Art Pitcher
Tapered spout makes these pitchers ideal for performing latte art. Graduation lines help with measuring and accuracy.
27250 32 oz Pitcher
Graduation marks at 12, 18 & 24 oz
27259 56 oz Pitcher
Graduation marks at 12, 18, 24 & 32 oz



Graduated Bell Pitcher
A classic bell pitcher with graduation lines to help with measuring and accuracy.
07227 16 oz Pitcher
Graduation mark at 8 oz
07237 25 oz Pitcher
Graduation marks at 12 & 18 oz
07247 40 oz Pitcher
Graduation marks at 20, 26 & 32 oz



Bell Pitcher
The classic bell shape is great for smoothly steaming milk.
27312 16 oz Pitcher
27315 25 oz Pitcher
27317 40 oz Pitcher



Graduated Pitcher
A straight sided pitcher with a pouring spout. Graduated measure lines inside to help with milk portions.
07202 32 oz Pitcher
07205 64 oz Pitcher

Steam Wand Insulator & Clips



22853
Steam Wand Clip
1.25" x 1"

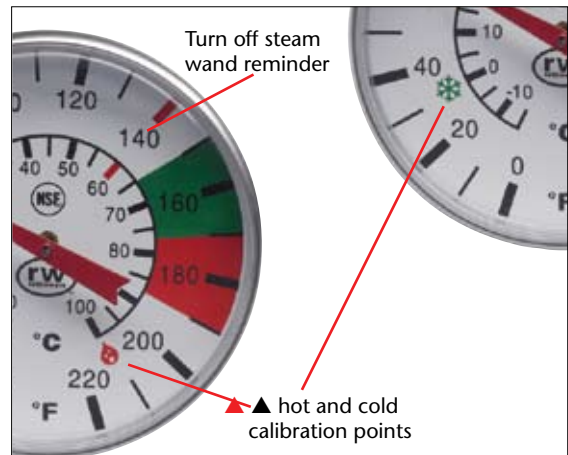


22857
Steam Wand Insulator
2" x .5"



22850
Steam Wand Clip
1.25" x .5"

Thermometers



Turn off steam wand reminder

▲ hot and cold calibration points



The Original Easy Steam
Comes with NSF clip. Calibration instructions included. 1.75" face.
11160 5" Stem
11170 7" Stem



The Easy Steam S10
Features a 10° face plate for easy reading. Comes with NSF clip. Calibration instructions included. 1.75" face.
11505 5" Stem
11507 7" Stem

Thermometer Clips

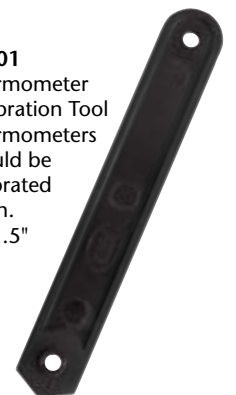


11023
NSF Clip



11082
Triangle Clip

11001
Thermometer Calibration Tool
Thermometers should be calibrated often.
4" x .5"



Knock Boxes & Sets

All knock boxes are made from heavy duty stainless steel and have a welded metal bar with replaceable rubber bar cover. Edge gaskets are made of molded rubber. Dimensions are interior and approximate.



25110 Knock Box
6" x 5.5" x 4"



25610 Knock Box Set
Set includes: knock box and stainless steel knock box holder.
6" x 5.5" x 4"



25620 Maple Knock Box Set
Set includes: knock box and maple knock box holder.
7.5" x 7" x 4"



25101 Basic Knock Box
6" x 5.5" x 4"



25680 Basic Knock Box Set
Set includes: basic knock box, stainless steel knock box holder and hush gasket. 6" x 5.5" x 4"



25670 Basic Maple Knock Box Set
Set includes: basic knock box, maple knock box holder and hush gasket. 7.5" x 7" x 4"



25125 Knock Box
9" x 5.5" x 4"



25650 Knock Box Set
Set includes knock box and stainless steel knock box holder. 9" x 5.5" x 4"



25120 Knock Box
6" x 5.5" x 6"



25201 Round Knock Box
6.25" x 7.5"

Knock Box Holders



25401 Knock Box Holder
Fits knock boxes 25110 and 25101 6" x 5.5" x 4"



25450 Maple Knock Box Holder
Fits knock boxes 25110 and 25101 6" x 5.5" x 4"



25402 Knock Box Holder
Fits knock box 25125
9" x 5.5" x 4"

Knock Chutes

Chutes allow for under counter grounds disposal.



25102 Knock Chute
6" x 5.5" x 4"



25130 Knock Chute
9" x 5.5" x 4"



25205 Round Knock Chute
6.5" x 7.5"

Splash Guards

Designed to fit in to knock box to keep area clean.



25501 Splash Guard
Fits all square and rectangular knock boxes and chutes.



25505 Splash Guard
Fits round knock box and chute.

Knock Box Parts



25901 Rubber Bar Cover
For knock boxes and knock chutes. 5.5"

25950 Rubber Bar Cover
For round knock box and round knock chute. 6.25"

02292 Hush Gasket
6" x 5.5"



Packing Mats & Grinder Tray



02331



02602

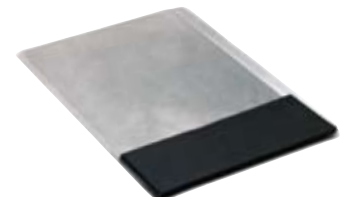


02332

02331 Packing Mat 18" x 6"

02602 Packing Mat 8.75" x 3"

02332 Packing Mat 8" x 6"



02600 Grinder Tray with Packing Mat
Tray fits under your grinder to catch coffee grounds, making it easier to clean. 13" x 10"

Note: All Knock Chute dimensions are interior sizes. We recommend you receive the product and measure before cutting your counter.

Tampers

Stainless Steel Tampers

Stainless steel tamper with ABS plastic handle. Three different shaped handles for maximum comfort.



Angular Handle Tamper
Height from top of base to top of handle is 2.75".
Weight is 13.25 oz.
21310-53 53 mm
21310-55 55 mm
21310-57 57 mm
21310-58 58 mm



Large Round Handle Tamper
Height from top of base to top of handle is 2.75".
Weight is 13.25 oz.
21320-53 53 mm
21320-55 55 mm
21320-57 57 mm
21320-58 58 mm



Small Round Handle Tamper
Perfect grip for smaller hands. Height from top of base to top of handle is 2.5".
Weight is 12.5 oz.
21330-53 53 mm
21330-55 55 mm
21330-57 57 mm
21330-58 58 mm



Aluminum Tamper
An all purpose tamper for commercial machines. Height from top of base to top of handle is 3.25".
Weight is 8.5 oz.
21101-53 53 mm
21101-55 55 mm
21101-57 57 mm
21101-58 58 mm



Forged Chrome Tamper
Highly durable forged chrome. Height from top of base to top of handle is 3". Weight is 1 lb. 5 oz.
21201-57 57 mm
21201-58 58 mm

10103
Mesh Tea Ball
2" dia.



Scoops



22771



03075

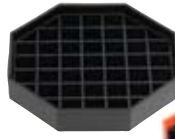


03073

Bean Scale Scoops

A Bean Scale Scoop makes weighing and pouring coffee beans easy. Flat base sits evenly on the scale and the funnel dispenses beans into grinder or bag without spills.

22771 Kilo Bean Scale Scoop, black
03075 Bean Scale Scoop, white
03073 Bean Scale Scoop, black
Holds approximately 2 lbs of beans.



61051



61050

61050 Drip Tray
4.5", black

61051 Decaf Drip Tray
4.5", orange

Utensils



22301



03251



03253



03313

22301 Foam Knife, 8"
03251 Whisk, 10.25"
03253 Drink Whisk, 10.25"
03313 Twist Spoon, 11.25"



22405
Triangle Tongs, 8"

22420
Scalloped Tongs, 9.5"

Brushes

Machine Brushes



31010

31050

Designed for safe use. White bristles to gauge regular cleaning.

31010 Group Brush, Zig Zag, 7.5"
31050 Group Brush, Drip Guard, 8"



31200

31201

31202

31200 Brass Brush, 7.25"
31201 Nylon Brush, 7.25"
31202 Stainless Steel Brush, 7.25"

Grinder Brushes



31110 Grinder Brush, 10"
31109 Grinder Brush, 9"
31107 Grinder Brush, 7.5"



31150 Angled Brush, 17"

Card Stamps



14101



14103



14104

ACTUAL SIZE



Designed to fit frequent drink cards. Self-inking stamps, black ink, .25" image.
14101 Coffee Cup
14103 Zigzag Cup
14104 Cup w/ Steam

Snap Bins

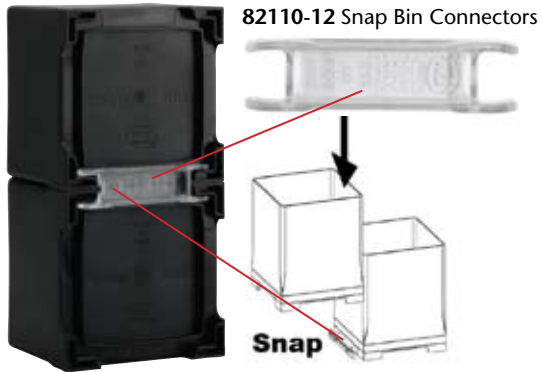
Innovative design for counter organization.

Use individually or snap together. Durable molded ABS plastic that will not scratch or crack. Dishwasher Safe. Made in the U.S.A.



- 82010-01 Snap Bin 8" Black
- 82010-02 Snap Bin 8" Clear
- 82020-01 Snap Bin 5" Black
- 82020-02 Snap Bin 5" Clear
- 82030-01 Snap Bin 3" Black
- 82040-01 Napkin Sleeve Holder, Black

Snap Bin Connectors



Connectors snap in place under the bin for a tight fit. Snaps together side-by-side or front to back.

Snap Bin Kits

Great for starting out your condiment bar. We've put together three different sizes of kits so you don't have to.



- 82310 Snap Bin Starter Kit**
- Kit includes the following: (1) 5" Snap Bin, (2) 8" Snap Bins, (1) 3" Snap Bin, (2) 3" Diagonal Dividers, (2) 5" Diagonal Dividers, (12) Snap Bin Connectors

- 83010-12**
- Clear Plastic Label Holders, 1 dz.
- Fits all Snap Bins.



Snap Bin Dividers



- 82123 Snap Bin Diagonal Divider 3" Black
- 82125 Snap Bin Diagonal Divider 5" Black
- Fits diagonally in snap bin to divide and hold multiple products in one bin.



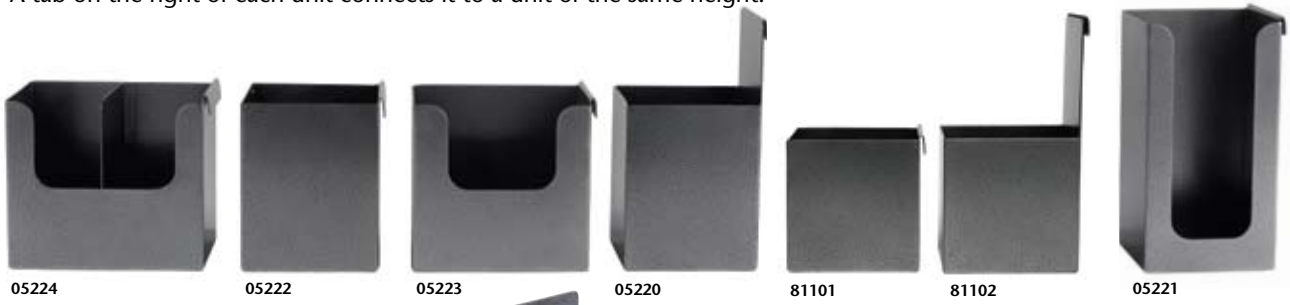
- 82320 Snap Bin Condiment Bar Kit**
- Kit includes the following: (2) Napkin Sleeve Holders, (1) 5" Snap Bin, (2) 8" Snap Bins, (1) 3" Snap Bin, (2) 3" Diagonal Dividers, (2) 5" Diagonal Dividers, (12) Snap Bin Connectors



- 82330 Snap Bin Complete Cafe Kit**
- Kit includes the following: (2) Napkin Sleeve Holders, (2) 5" Snap Bins, (3) 8" Snap Bins, (2) 3" Snap Bins, (2) 3" Diagonal Dividers, (2) 5" Diagonal Dividers, (12) Snap Bin Connectors

Modular Organizers

Keep your condiment bar neat and organized with a customized, stainless steel counter system. A tab on the right of each unit connects it to a unit of the same height.



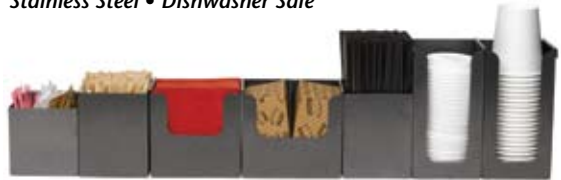
05224 05222 05223 05220 81101 81102 05221

- 05224 Sleeve Holder 5.75" x 4" x 5"
- 05222 Basic Holder 4" x 4" x 5"
- 05223 Napkin Holder 5.25" x 4" x 5"
- 05220 Extended Basic Holder 4" x 4" x 7.5"
- 81101 4" Basic Holder 4" x 4" x 4"
- 81102 4" Extended Basic Holder 4" x 4" x 7.5"
- Walls are 1" shorter for easier access to condiments
- 05221 Cup/Lid Holder 4" x 4" x 7.5"
- 05219 Divider for modular organizers 4" x .75" x 5", Fits 05220, 05222, 05223



05219

Stainless Steel • Dishwasher Safe



Acrylic Organizers



05290 Lid Holder 4.25" x 4.25" x 10"
05288 3 Lid Organizer 12.75" x 4.25" x 10"



05286 Lid Holder 4.25" x 4.25" x 5"



05289 Straw Holder 4.25" x 4.25" x 5"



06225 Metal Coffee Bag Display 20.5" x 10.5" x 8.25" Maximize your display space with this riser. Coffee Bag Display features a removable frame. Frame holds 8.5" x 11" image.



05285 Coffee Center 22" x 4.5" x 8.25"



05291 Sleeve Holder 5.25" x 3.25" x 11.75"



05287 Napkin Holder 5.25" x 5.25" x 5"

Syrup Racks

Fits 6" x 6" containers

- 86020 Corner Rack 12.5" x 12.5"
- 86010 Inline Rack 18.5" x 6.5" x 5.75"



86020



86010

Shakers



New! Plastic Shakers with stainless steel tops
22650 Mesh Top Plastic Shaker, 10 oz
22651 Plastic Shaker, 10 oz



Wire Racks

- 5 Bottle Wire Racks 19" x 4" x 10"
06221-S Silver
06221-B Black
- 3 Bottle Silver Wire Rack 81203-S 12" x 4" x 6"

06221-S

06221-B

81203-S



26105 Plastic Pour Spouts

